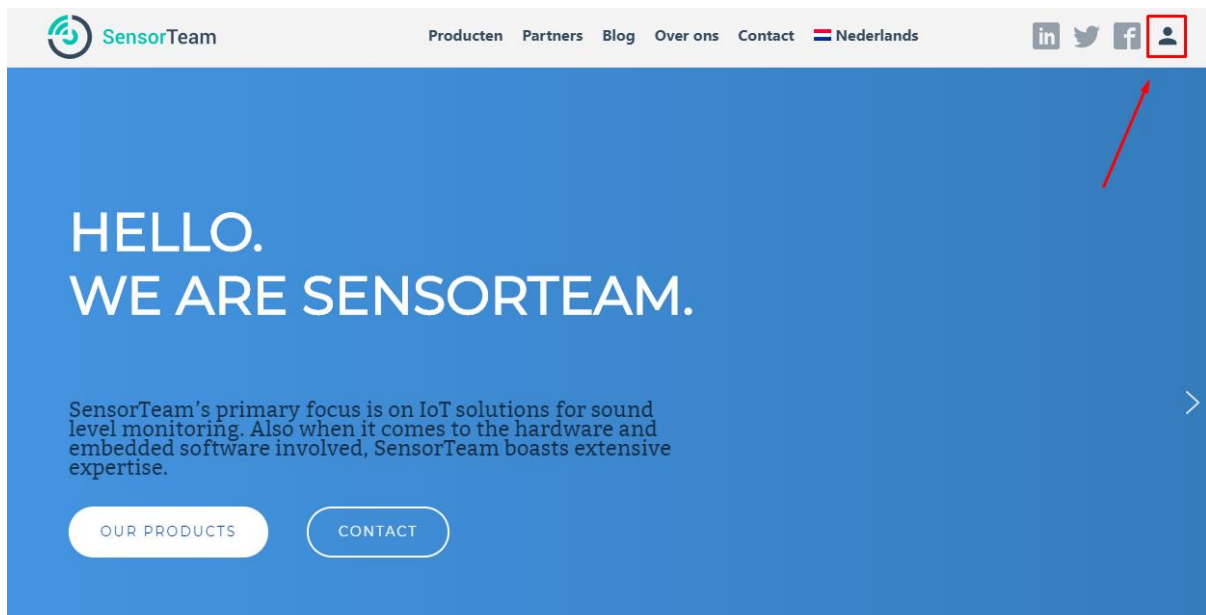


User Manual Dashboard+

To login, please click on the login-icon in the right top of the [SensorTeam](#) website:



The login details will be provided by email after ordering the IoT SoundSensor™.



Dashboard

@ demo@sensorteam.io

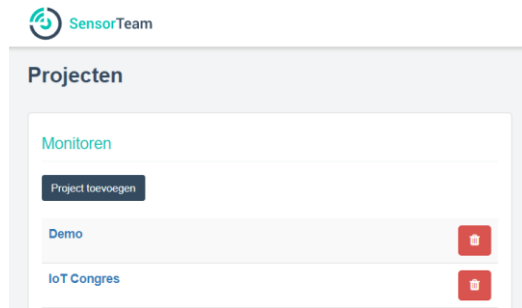
.....

Aanmelden

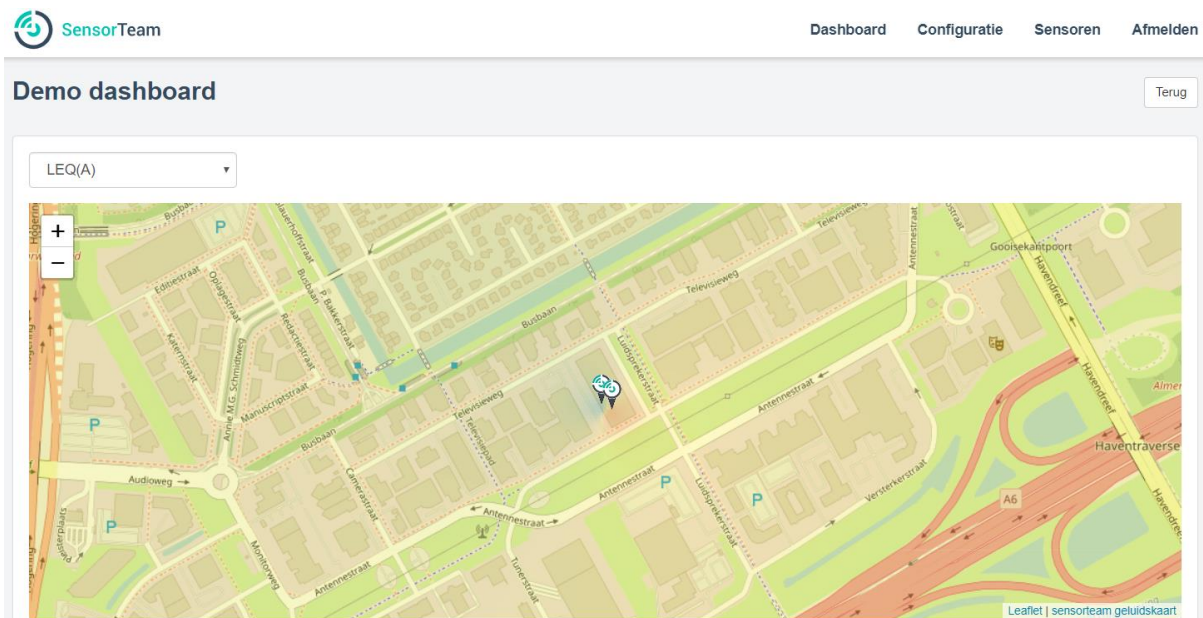
[Wachtwoord vergeten?](#)



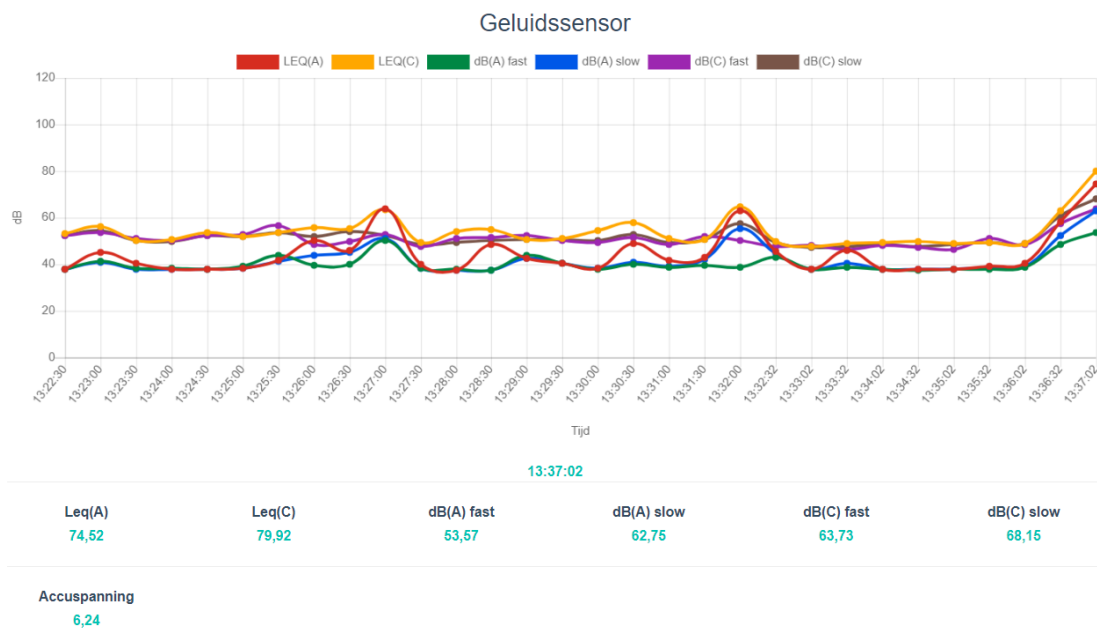
Choose your project:



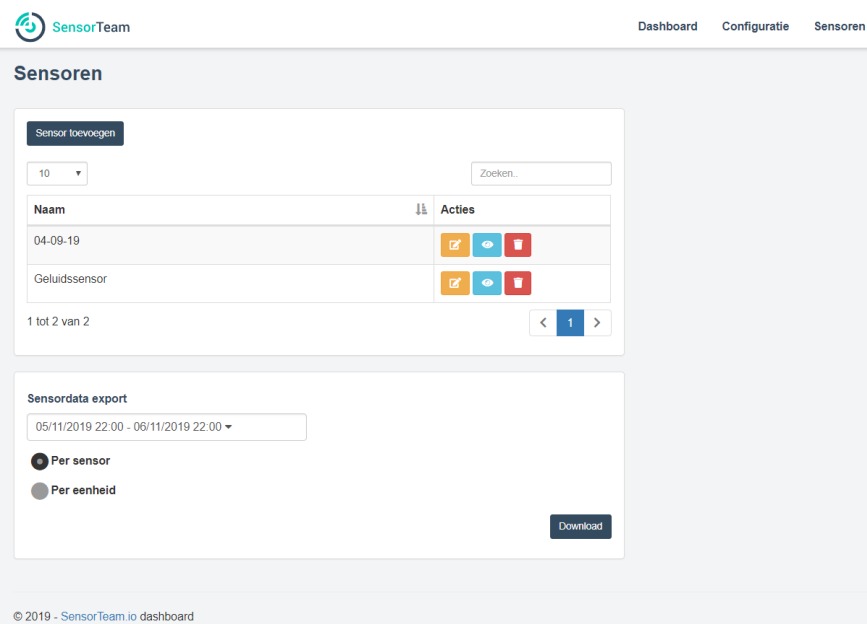
Your sensors will be shown on the map. Location is determined automatically by GPS.



By clicking on one of the sensors-icons, the current decibel measurements appear in a graph. Under the graph, the last received measurement is shown as well.



Under the **Sensors** section (in top navigation) you can add, remove and adjust sensors. At the bottom of this page you can export the sensor data in Microsoft Excel format.



© 2019 - SensorTeam.io dashboard



Change the sensor name and version. Measurement deviation in the sound sensor can be corrected here. Geolocation can be entered manually if GPS and/or LoRa data has no valid geo positioning.



The screenshot shows the 'Sensor wijzigen' (Change Sensor) form. It includes the following fields and controls:

- Naam** (Name): A text input field containing 'Geluidssensor'.
- Versie** (Version): A dropdown menu showing '3'.
- Correctie** (Correction): A slider control ranging from -10 to 10, with a current value of 0.5 dB.
- Locatie** (Location): A radio button labeled 'Handmatig' (Manual) is selected.
- Buttons: 'Opslaan' (Save) and 'Annuleren' (Cancel).

Endpoint

Please use the following endpoint:

<https://gateway-dot-sensorteam-io.appspot.com/api/sensor/data/sound>

